

**Special Interest
Articles:**

- 8 Reasons to go Mobile & Spacesaver's New Website
- Goelst® Modular Casework
- New Product Highlight – KI Intellect Wave™
- Label Printing Solutions
- Meet your Systemcenter Market Managers
- Showroom Special – KI, Lola Lounge Seating

Corporate Overview

History

Established 1976, The Systemcenter, Inc. has developed into a local, award-winning, nationally recognized company.

Our Mission

Furnishing solutions and space-saving interiors that improve efficiency and performance.

Our Vision

The Systemcenter, Inc. is a leader in providing solutions for Healthcare, Education, Government and Business, integrating technology, quality, efficiency and sustainability.

Our Values

Quality, Integrity & Service

Quotes from Great Leaders

"The ultimate measure of a man is not where he stands in moments of comfort, but where he stands at times of challenges and controversy."

Dr. Martin Luther King, Jr.

The Systemcenter, Inc. (808) 847-0911
www.systemcenter.com

Happy New Year!

Our Sincere thanks for your valued business. We appreciate having you as our customer and look forward to serving you this New Year!

8 Reasons to go Mobile By Tess DeCorte

Storage space is a big issue for many companies as files and supplies accumulate year after year. Cost, organization and safety issues are some key factors when deciding on a type of shelving system. This is why many companies are switching to Spacesaver High-Density Mobile Storage Systems.

Here are 8 reasons why you should go mobile:

1 High-Density Mobile Storage Systems allow you to double the storage capacity of your existing space. *Most companies simply don't have enough space & can't afford to construct new facilities.*

2 Mobile systems provide a cost-effective solution to accommodate growth. *Mobile systems offer long-term benefits. And allow expansion in existing spaces.*

3 Costly fees associated with offsite storage & retrieval are eliminated. *Many companies today turn to offsite storage. Onsite mobile storage systems save money and increase productivity.*

4 Mobile storage improves efficiency & productivity. *The greater capacity of mobile storage allows all items to be kept close at hand. Systems can be programmed to permit multiple aisles to be opened at once; and short carriages cut retrieval time.*

5 All systems can be configured to store anything-from small, delicate items to bulky and large equipment. *A wide choice of shelving options is available. Deep shelves & heavy-duty carriages can handle large boxes & heavy loads. The possibilities are endless.*

6 Items stay clean and provide

security. Locking devices are available on any of the Spacesaver High-Density Mobile Systems. It can be securely closed and sealed to protect stored items and this also guarantees that aisles can be opened only by someone who has the proper authority.

7 Items are more readily accessible. *Mobile systems can improve accessibility through customization. For example, increased density allows medical records to be kept in a treatment area and pharmaceuticals to be stored at eye height and below.*

8 Mobile storage provides a safe employee environment. *Spacesaver High-Density Mobile Systems come standard in-rail anti-tip devices to provide stability and safety. The design enables rails, carriages and shelving to be tied together as an integral unit.*



Introducing the NEW Spacesaver.com!

Rich content ~ Clean Look ~ Easy Navigation ~ Optimized Search Engines



Spacesaver brings in the New Year with a completely new website! Spacesaver has added 3 new microsites & a brand new corporate website (www.spacesaver.com) to complement the previously launched www.readyandsecure.com (Military Site), www.pointofneedstorage.com (Healthcare Site) & www.collartoconviction.com (Public Safety Site). The three new microsites offer specific product & market information pertaining to: Museums, Library/Education and Business.

Goelst® Modular Casework

We are excited to introduce a new line, Goelst USA! Goelst USA, LLC has grown to become the recognized leader in modular casework and cabinetry for the healthcare market. With a continuous focus on healthcare, Goelst medical cabinetry has provided work environments that both administrators and end-users can be proud of. A product line of over 55,000 medical cabinets, available in powder-coated steel, laminate, and stainless steel, make these custom environments a Goelst specialty. Each year, they provide unique solutions for a long list of satisfied healthcare and government clients.



Nurse Stations



Exam/Procedure Rooms



Lab Areas



Pharmacy



- Reuse and Reconfigure -

Want the look and feel of fixed casework without the headaches? Goelst will provide the solution. The end result is a high end built-in look, yet the complete station is modular and reconfigurable. Stop throwing away your casework anytime your environment changes. Instead reuse and reconfigure.

- Solutions -

Tired of not getting the service you deserve from your casework supplier? Working closely with our customers, Goelst helps to develop innovative solutions that create highly effective work environments, address HIPPA Compliance, future expansion, and provide the aesthetics needed in today's patient areas.

- Meeting Your Needs -

Are you really getting what you want? No two organizations have the same requirements. With the Goelst® system, there are over 50,000 components to create the work environment that fits your organizational needs. The only limit to meeting your needs is imagination.

Distraught patients do not want to be surrounded by a cold, industrial feeling environment, but you do require durability in your furniture. Few areas demand more emphasis on the durability of its furniture than your exam and procedure areas. Goelst products supply environments that are durable, but offer finishes and textures that reassure the most apprehensive patients. You can give your organization a calming atmosphere *and* supply your employees with the durability they need. How durable? How about a ten year warranty including on-site service.

- Experience -

We understand that form follows function, but we also believe that function must follow experience. With our experts working with you, together we have the experience to create unique, creative & functional patient care environments.

- What You Need; The Way You Need It -

Labs. Talk to the people who work there long hours and they see it a little differently... a second home. If a lab is like a home, wouldn't you want it furnished the way you need it, not the way someone tells you it should be? Goelst is here to help you furnish your lab like you need it. With over 50,000 products, chances are we have exactly what you are looking for, whether it needs to be steel, laminate, stainless steel, resin or phenolic.

- Lab Tested -

Chances are you would like to know what you are getting before you buy it. That is why our furniture and equipment has gone through extensive testing, and why Goelst *always* provides 3D pictures of the design before you buy anything. We offer lab casework in powder-coated steel, laminate, or stainless steel. Countertops are available in solid phenolic, resin, laminate, or stainless steel; you name it, we can provide it!

- Organization is Key -

Can you think of a place where organization is more important than in a pharmacy? With thousands of drugs needing a home, you need a furniture system that can handle your various storage needs. Our new drawer divider system further expands your ability to sort and label everything you need, in order to eliminate hunting for medicines.

- Performance, Period -

Goelst provides products that work for you, making your life easier, saving you time and money. We assess your needs, create solutions to meet those needs, and then deliver by providing all aspects of fulfillment; product, installation services and after the sale care.

≡ New Product Highlight – Intellect Wave™ By Tess DeCorte



Elegant Design | Ingenious Comfort | Superior Strength



Smart spaces inspire achievement. KI's award-winning educational furniture encourages both interaction and autonomy in learning environments. That's why more administrators are choosing high performance KI products in the classroom and beyond.



Style – Embracing Design

Clean visual forms create a fresh, modern look. It's the unique shell design has all the proper curves to support functionality and ergonomics in the classroom. An extensive selection of colors and finishes will adapt to any environment.

Comfort – Forming the Function

Comfortable furniture leads to engaged students. Wave classroom furniture is designed to provide support and still "give" in just the right places. Better comfort results in improved concentration. With multiple sizes, Wave chairs become familiar learning tools from grade to grade. And, the integral handle makes Wave furniture easy to move and reconfigure.

Durability – Exceeding Expectations

Engineered to withstand tough classroom use, Wave furniture exceeds industry standards for durability. Elliptical tubing provides superior strength. Lightweight, pliable poly shells resist scratching, fading, chipping and denting. The result is classroom furniture that gives years of low-maintenance service. And, it's backed by KI's 15 year warranty.

Intellect Wave™ Designs:

- 4-Leg Chair
4 sizes fit all ages
- Cantilevered Desk
Available with plastic, Rezilyte or laminate tops
- Cantilevered Chair
Slides easily on carpet for easy reconfiguration
- Combo Chair/Desk
Combining seat & desk into one unit minimizes inventory & optimizes floor space.
- Double Entry Desk
Sled base slides easily on carpet for easy reconfiguration. Allows entry from either side – no need for right- & left-handed units.
- Tablet Arm Chair
Compact is ideal where space is a premium. Combining a seat & desk into one unit minimizes inventory & optimizes floor space.
- Task Chair
Ergonomic mobile seating. Height-adjustable seat is ideal for teachers, classrooms or computer labs.

≡ Label Printing Solutions By Tess DeCorte



Do you find yourself taking a lot of time out of your day creating a folder with labels? You're sitting at your desk . . . affixing a year band, then color coded alpha or numeric bands and finally your name label which you would have to handwrite or type the information beforehand.

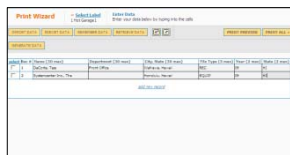
We have a perfect solution that will improve your efficiency! Colorflex offers printing of any type of label at the tip of your fingers! LabelsAnywhere.com is another breakthrough filing solution from Colorflex. With LabelsAnywhere, you can print brilliant color-coded labels complete with personalized bar codes and graphics, from any location, so you get the labels you want, when you want them. Contact Tess at tess@systemcenter.com to get your quote today!

Any Label... Anytime... Anywhere in 4 EASY STEPS!

1 Design your label or select from our growing catalog of designs:



2 Enter or import your data:



3 Print from desired colored printer:



4 Apply to your folder:



≡ As Seen on....



We have Stan Supapo seen above, on forklift featured on the front page of Hawaii Tribune Herald. He is delivering boxes which were unloaded from a shipping container to the underground level of Hale Kaulike.

Stan Supapo, along with our Systemcenter installation team has been working at Hilo's new judiciary building since July 2008. They don't have a confirmed opening date to this 175,000 square foot building, but anticipate completion by late August this year.

Systemcenter's responsibility is to furnish, deliver and install furniture & storage systems for different areas of the Hilo Judiciary Complex. Some of our furnishings include Spacesaver High Density Mobiles and Shelving Systems, Steel Caseloads, KI Desks and

Conference Tables.



Seen above are Joyce Edwards, CFO of The Systemcenter, Inc., Robert Kiyosaki, author of the bestselling book, Rich Dad, Poor Dad and Sandra Edwards,

Education Market Manager of The Systemcenter, Inc.

Small Business Hawaii held its 33rd Annual Business Conference on January 23rd with more than 200 business owners in attendance. The conference theme, "Small Business 2009: Overcoming Hawaii's Economic Challenges", was positive and focused on solutions to current economic and political concerns.

Joyce has been active with Small Business Hawaii since 1983 and is on the Board of Directors.

SYSTEMCENTER[®]

We bring order to business ■

The Systemcenter, Inc.

Showroom/Office
1738 Silva Street
Honolulu, HI 96819-3137
Ph. (808) 847-0911
Fax (808) 848-2784
Toll Free (800) 560-8882
License #C 18046
www.systemcenter.com

Hot Garage™
Revolutionizing the Garage

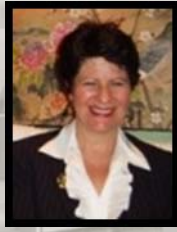
Phone:
(808) 843-8011

Fax:
(808) 848-2784

License #C 18046
www.1hotgarage.com

Copyright 2009

☰ Meet your Systemcenter Market Managers!



SÄNDRA EDWARDS
Education/Library/
Museum Market Manager
sandra@systemcenter.com



DAWN SEED
Healthcare/Hospitality
Market Manager
dawn@systemcenter.com



CHRISTIAN ARNES
Government/Justice
Market Manager
christian@systemcenter.com



JOE SECCHIAROLI
Government
Market Specialist
joe@systemcenter.com

☰ Showroom Special – KI, Lola Lounge Seating

There's no law that says office furnishings have to stick to the straight and narrow. In fact, you can completely transform the look and feel of any workplace by introducing the contemporary curves of a Lola sofa.

We are currently running a showroom special on one Lola sofa at a first come first serve basis. This elegant seating is with fabric upholstery (actual fabric color is darker than shown in picture).

Please come by our showroom & purchase it for only \$820 today!

Suggested retail is over \$1500.00. Price above is plus tax. Delivery is available at an additional charge.

Dimension W 76" D 31.5" H 32"
Seat W 65.75" D 20" H 18.5"
Arm H 24-24.75"



PRSR STD
U.S. POSTAGE
PAID
HONOLULU, HI
PERMIT NO. 59

The Systemcenter, Inc.
Showroom/Office
1738 Silva Street
Honolulu, Hawaii 96819-3137
We bring order to business ■

SYSTEMCENTER[®]